



Innovation
that excites

NISSAN
LEAF

Zero Emission™



[Exterior design](#) | [Interior design](#) | [Technology & Performance](#) | [Style & Accessories](#) | [Technical Specifications](#)

[Print](#) | [Close](#)



#1 ELECTRIC VEHICLE
SOLD GLOBALLY *



GET ON TOP OF YOUR DRIVE WITH NISSAN LEAF

LEAF evolves. Choose your road, choose your style and start your change.

Nissan LEAF :
Up to 390 km** of zero emissions range, powered by iconic urban tech for a fully connected, simply amazing drive in the city.

Nissan LEAF e+ :
Up to 510 km** of unprecedented performance, boosting your commuting experience.

*Source: AAA, cumulative Nissan LEAF registrations over the year 2018 in the EU, Norway, Switzerland and Iceland.
**Power consumption (Wh/km): combined 180-206; CO₂ emission combined (g/km): 0. Zero CO₂ emissions while driving. Range figures are obtained from laboratory testing in accordance with EU legislation and are intended for comparison between the different types of vehicles. The information does not refer to a particular individual vehicle and does not constitute part of the offer. The figures may not reflect real driving results. Optional equipment, maintenance, driving behaviour and non-technical factors like weather conditions may affect the official results. Figures were determined under the new Worldwide harmonized Light vehicles Test Procedure (WLTP) test cycle. Figures provided are pending homologation.



YOUR DRIVE, YOUR CHOICE

Change your driving mood at the flick of a switch to get the most out of your Nissan LEAF.



Exciting Drive. 150PS of power packed performance with instant torque from LEAF's 40kWh battery, while LEAF e+ adds even more performance with 217PS and 340Nm of torque.



Urban Drive. Switch to eco mode for up to 390 km* of long lasting fun. Up to 510 km* for LEAF e+.

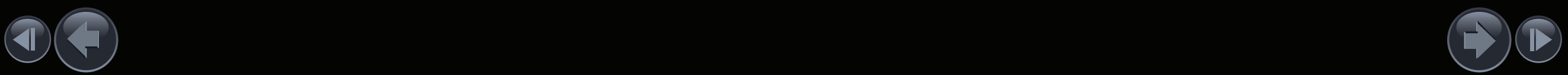


Intelligent Drive. Thanks to e-pedal, one pedal driving makes life simple. Traffic jam ahead? ProPILOT** advanced driving assistance makes every trip a journey worth doing. Available on both LEAF and LEAF e+.



*Power consumption (Wh/km): combined 180-206; CO₂ emission combined (g/km): 0. Zero CO₂ emissions while driving. Range figures are obtained from laboratory testing in accordance with EU legislation and are intended for comparison between the different types of vehicles. The information does not refer to a particular individual vehicle and does not constitute part of the offer. The figures may not reflect real driving results. Optional equipment, maintenance, driving behaviour and non-technical factors like weather conditions may affect the official results. Figures were determined under the new Worldwide harmonized Light vehicles Test Procedure (WLTP) test cycle. Figures provided are pending homologation.

**ProPILOT is available on a limited range of vehicles. ProPILOT is an advanced driver assist technology but cannot prevent collisions. ProPILOT is intended for "eyes on/hands on" for highways only (road separated by barriers). It is the driver's responsibility to stay alert, drive safely and be able to take control of the vehicle at any time.



INTELLIGENT INTEGRATION TO MAKE YOUR CAR A MORE **CONNECTED** SPACE.

Integrate your life with your most exciting partner.



ALL NEW NISSANCONNECT SERVICES APP.

Whatever your need is within reach in the Nissan LEAF. Remotely start your vehicle charging, control your vehicle temperature and constantly access your parking position thanks to the brand new NissanConnect Services App. Available on both LEAF and LEAF e+.



NEW 8" DISPLAY WITH NISSAN DOOR-TO-DOOR NAVIGATION

The 8" multi-touch display is the heart of your Infotainment system, with finger tip access to fast, accurate turn-by-turn navigation by TomTom, music, information and more, plus smartphone integration via Apple CarPlay and AndroidAuto. The road has never been clearer. Available on both LEAF and LEAF e+.



CHOOSE YOUR CHARGING AND KEEP MOVING

Just plug your Nissan LEAF into your home socket for an overnight top up, or use the largest quick charging network in Europe for a charge on the go. The charging time is impacted by a number of factors, see below for further information.



HOME CHARGING
7KW WALLBOX*



NISSAN LEAF ASENTA: ALERT TO FULL CHARGE IN UP TO 13H00 MIN
NISSAN LEAF N-CONNECTA / TEKNA: ALERT TO FULL CHARGE IN UP TO 7H30 MIN
NISSAN LEAF e+: ALERT TO FULL CHARGE IN UP TO 11H30 MIN



PUBLIC QUICK CHARGING
CHADEMO 50KW RAPID CHARGER**



NISSAN LEAF: 20% TO 80% IN AROUND 60 MIN
NISSAN LEAF e+: 20% TO 80% IN AROUND 90 MIN

*Figures quoted are for a 40kWh and 62kWh batteries, wallbox sold separately, from Nissan LEAF accessories catalogue.

**Rapid Charging: Figures quoted are for 40kWh (LEAF) and 62kWh (LEAF e+) batteries. Time dependent on charging conditions, including charger type and condition, battery temperature as well as ambient temperature at point of use. Indicated rapid charging time requires use of a CHAdeMO rapid charger. The Nissan LEAF is designed to support the majority of journeys in daily life and is equipped with charging safeguards to protect the battery during repeated rapid charging sessions in a short period of time. The time taken for successive rapid charging can take longer if the battery temperature activates the battery safeguarding technology. Figures provided are pending homologation.



DISCOVER NISSAN LEAF e+

Go for the superlative experience. Nissan LEAF e+ features our iconic Nissan Intelligent Mobility technology to deliver 217PS of performance and up to 510 km*** of unparalleled, zero emissions driving.

DRIVE FOR RANGE +
510 km
WITH THE e+ 62KWH BATTERY***

DRIVE FOR POWER +
217PS AND 0-100kmp IN 7.1 SECONDS

DRIVE FOR CONFIDENCE +
PROPILOT ADVANCED DRIVING
ASSIST**** AND E-PEDAL FOR THE
SIMPLEST, SIMPLY AMAZING DRIVE.

NISSAN LEAF e+:
More choice, more range,
more power



***Power consumption (l/100km): combined 18.0. 20% CO₂ emission combined (g/km): 0. Zero CO₂ emissions while driving. Range figures are obtained from laboratory testing in accordance with EU legislation and are intended for comparison between the different types of vehicles. The information does not refer to a particular individual vehicle and does not constitute part of the offer. The figures may not reflect real driving results. Optional equipment, maintenance, driving behaviour and non-technical factors like weather conditions may affect the official results. Figures were determined under the new Worldwide harmonized Light vehicles Test Procedure (WLTP) test cycle. Figures provided are pending homologation.

****ProPILOT is available on a limited range of vehicles. ProPILOT is an advanced driver assist technology but cannot prevent collisions. ProPILOT is intended for "eyes on/ hands on" for highways only (road separated by barriers). It is the driver's responsibility to stay alert, drive safely and be able to take control of the vehicle at any time.



UK'S BEST SELLING ELECTRIC VEHICLE HAS NOW TWO VERSIONS TO MATCH A RANGE OF LIFESTYLES

Nissan LEAF

Up to 390 km*
for in-the-city driving

MAIN STANDARD FEATURES

ACENTA

Top Connectivity

16" Alloy Wheels, Rear View Camera, Intelligent Cruise Control, New NissanConnect 8" Touchscreen Navigation and Entertainment System, Apple Car Play and Android Aut and NissanConnect Services App, 3.6kW on-board charger

N-CONNECTA

Urban Style (in addition to Acenta grade)

17" Alloy Wheels, Synthetic Leather Trim, Privacy Glass, 6.6kW on-board charger, Intelligent Around View Monitor, Moving Object Detection, Intelligent Driver Alert, Front and Rear Parking Sensors, Anti Dazzle Rear View Mirror

TEKNA

Iconic Tech (in addition to N-Connecta grade)

17" Alloy Wheels, Part Leather and Ultrasuede Trim, LED Headlights with Auto Leveling, Bose Premium Audio System with 7 Speakers, Electronic Parking Brake, ProPILOT with Traffic Jam Pilot and Lane Keep Assist

Nissan LEAF e+

Up to 510 km*
of zero emissions commuting

MAIN STANDARD FEATURES

TEKNA

Iconic Intelligent Mobility (in addition to Tekna grade)

Acceleration 0 - 100kph: 7.1 seconds
Power Output up to 217PS
Torque Output up to 340Nm
Revised Suspension Set-up
Metallic Blue Front Bumper Accents
e+ Embossed Charging Port

*Power consumption (Wh/km): combined 180-206; CO₂ emissions combined (g/km): 0. Zero CO₂ emissions while driving. Range figures are obtained from laboratory testing in accordance with EU legislation and are intended for comparison between the different types of vehicles. The information does not refer to a particular individual vehicle and does not constitute part of the offer. The figures may not reflect real driving results. Optional equipment, maintenance, driving behaviour and non-technical factors like weather conditions may affect the official results. Figures were determined under the NEDC test cycle. Figures provided are pending homologation.

**ProPILOT is available on a limited range of vehicles. ProPILOT is an Advanced Driver Assist technology but cannot prevent collisions. ProPILOT is intended for "eyes on/hands on" for highways only (road separated by barriers). It is the driver's responsibility to stay alert, drive safely and be able to take control of the vehicle at any time.

TAKE THE NEXT STEP CHOOSE YOUR LEAF

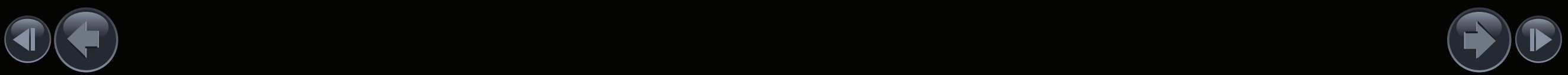


DIMENSIONS

- A: Overall length: 4,490MM
- B: Wheelbase: 2,700MM
- C: Overall width: 1,788MM
- D: Nissan LEAF Overall height: 1,540MM (1,530 mm with 16" alloy wheels)
Nissan LEAF e+ Overall height: 1.545MM*

*Figures provided are pending homologation

CHOOSE YOUR COLOUR



STANDARD EQUIPMENT

ALL NISSAN LEAFS COME WITH:

EXTERIOR:

- LED signature daytime running lights
- LED signature tail lights
- Body coloured door mirrors with integrated LED indicators
- Chrome door handles
- Illuminated charging port

INTERIOR:

- Height adjustable driver seat
- 60:40 split folding rear seats
- Front centre console and armrest
- D-shaped leather steering wheel
- Remote audio control

COMFORT & CONVENIENCE:

- Nissan i-Key
- Start push button
- Blind Spot Warning
- Automatic air conditioning (with timer & heater)
- Intelligent Auto headlights with follow me-home functionality & auto hazard lights

EXTERIOR:

- High Beam Assist
- Auto-wipers
- Intelligent Cruise Control
- Speed limiter
- Front and rear electric windows
- Tilt adjustable steering wheel
- USB port
- AUX socket

AUDIO & TECHNOLOGY:

- 7" TFT screen combimeter
- NissanConnect EV navigation and entertainment system with 8" touchscreen
- AM/FM/DAB audio system
- e-Pedal (with regenerative function)
- Android™ Auto and Apple™ CarPlay

SAFETY:

- ABS with EBD and Brake Assist
- Hill Start Assist
- Driver, passenger, side and curtain airbags
- ISOFIX child seat anchorage points (front and rear)
- Intelligent Trace Control
- Intelligent Emergency Braking with Pedestrian Recognition
- Lane Departure Warning
- Intelligent Lane Intervention
- Rear Cross Traffic Alert
- Blind Spot Warning
- Thatcham alarm system

OPTIONAL EXTRAS

- Special solid paint
- Metallic paint
- Premium metallic paint
- Pearlescent paint

ACENTA

IN ADDITION TO STANDARD EQUIPMENT

EXTERIOR:

- 16" alloy wheels
- Front fog lights
- Metallic blue rear finisher

AUDIO & TECHNOLOGY:

- 6 speakers
- Rear view camera

CHARGING:

- 40kWh battery
- 50kW CHAdeMO rapid charger
- 3.6kW on-board charger
- Mode 3 Type 2 charging cable
- 3 pin EVSE charging cable

OPTIONAL EXTRAS

- Spare Wheel
- Tech Pack: Intelligent Around View Monitor, Moving Object Detection, Intelligent Driver Alert, front and rear parking sensors
- Heat Pack: Heated front and rear seats with heated steering wheel
- ProPILOT: Traffic Jam Pilot, Lane Keep Assist, Electronic Parking Brake



N-CONNECTA

IN ADDITION TO ACENTA

EXTERIOR:

- 17" alloy wheels
- Rear privacy glass
- Electric folding door mirrors
- Gloss black B-pillar

INTERIOR:

- Synthetic part leather / part cloth trim
- Heat Pack: Heated front and rear seats with heated steering wheel

COMFORT & CONVENIENCE:

- Anti dazzle rear view mirror

AUDIO & TECHNOLOGY:

- Tech Pack: Intelligent Around View Monitor, Moving Object Detection, Intelligent Driver Alert, front and rear parking sensors

CHARGING:

- 6.6kW on-board charger

OPTIONAL EXTRAS

- LED Pack: Full LED headlights with auto-levelling and LED fog lights
- Spare Wheel
- ProPILOT: Traffic Jam Pilot, Lane Keep Assist, Electronic Parking Brake
- Special solid paint
- Metallic paint
- Premium metallic paint
- Pearlescent paint
- Two-tone paint

TEKNA

IN ADDITION TO N-CONNECTA

EXTERIOR:

- LED Pack: Full LED headlights with auto-levelling and LED fog lights

INTERIOR:

- Part leather / Ultrasuede trim

AUDIO & TECHNOLOGY:

- Bose premium audio system with 7 speakers
- ProPILOT: Traffic Jam Pilot, Lane Keep Assist, Electronic Parking Brake

OPTIONAL EXTRAS

- Spare Wheel
- ProPILOT Park
- Special solid paint
- Metallic paint
- Premium metallic paint
- Pearlescent paint
- Two-tone paint



e+ TEKNA

IN ADDITION TO TEKNA

EXTERIOR:

- Metallic blue front bumper accents
- e+ embossed charging port
- Revised suspension set-up

TECHNOLOGY:

- Power output of 217PS with 340Nm torque
- 510 km range

CHARGING:

- 62kWh battery
- 50kW CHAdeMO quick charger with 100kW capability

OPTIONAL EXTRAS

- Spare Wheel
- ProPILOT Park
- Special solid paint
- Metallic paint
- Premium metallic paint
- Pearlescent paint
- Two-tone paint



COLOURS



ARCTIC SOLID WHITE 326



STORM WHITE QAB
AVAILABLE WITH TWO-TONE PEARL
BLACK ROOF (XDF) / TWO-TONE INK BLUE
ROOF (XDH)



BLADE SILVER KYO



SPRING CLOUD KBR
AVAILABLE WITH TWO-TONE PEARL
BLACK ROOF (XDG)



GUN METALLIC KAD
AVAILABLE WITH TWO-TONE PEARL
BLACK ROOF (XDJ)



PEARL BLACK Z11
AVAILABLE WITH TWO-TONE GUN
METALLIC ROOF (XDK)



FLAME RED Z10



MAGNETIC RED NAJ
AVAILABLE WITH TWO-TONE PEARL
BLACK ROOF (XDS)



CHESTNUT BRONZE CAN

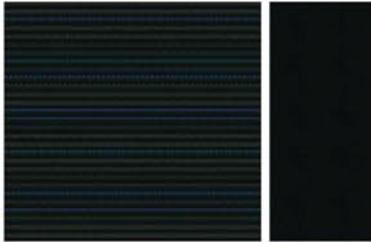


VIVID BLUE (RCA)
AVAILABLE WITH TWO-TONE PEARL
BLACK ROOF (XDY)

Two-Tone Paint colour options available from N-Connecta grade.

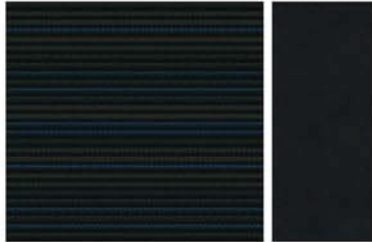
TRIMS

ACENTA



Black woven fabric

N-CONNECTA



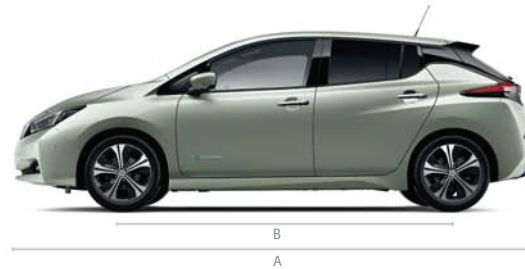
Black part synthetic leather part cloth

TEKNA / e+ TEKNA



Black part leather with Ultrasuede inserts

DIMENSIONS



A: Overall length: 4,490mm
B: Wheelbase: 2,700mm
C: Overall width: 2,030mm
D: Overall height: 1,540mm



WHEELS



ACENTA 16" ALLOY WHEEL



N-CONNECTA AND TEKNA
17" ALLOY WHEEL

WARRANTY

Nissan LEAF Lithium-Ion battery warranty also protects against capacity loss below 9 bars of capacity (out of 12) as shown on the LEAF's capacity gauge. For a period of 8 years



LEAF TECHNICAL DATA

		ACENTA	N-CONNECTA	TEKNA	e+ TEKNA
MODEL					
Engine type		Electric Motor	Electric Motor	Electric Motor	Electric Motor
Drivetrain		2WD	2WD	2WD	2WD
Seating capacity		5	5	5	5
Overall Length	mm	4490	4490	4490	4490
Overall Width without mirrors	mm	1788	1788	1788	1788
Overall Width with mirrors	mm	2030	2030	2030	2030
Overall Height (unladen)	mm	1530	1540	1540	1545
Kerb Weight min / max	kg	1580 - 1640	1580 - 1640	1580 - 1640	1731 - 1791
Gross Vehicle Weight	kg	1995	1995	1995	2140
Maximum payload	kg	450	450	450	450
Maximum roof load	kg	35	35	35	35
Wheelbase	mm	2700	2700	2700	2700
Overhang, front/rear	mm	1005 / 785	1005 / 785	1005 / 785	1005 / 785
Track front	mm	1540 / 1530	1540 / 1530	1540 / 1530	1540 / 1530
Track rear	mm	1555 / 1545	1555 / 1545	1555 / 1545	1555 / 1545
Turning circle, kerb to kerb	m	10.6	11.0	11.0	11.0
Luggage capacity (without parcel shelf)	litres	435	435	420	420
Luggage capacity (with parcel shelf)	litres	400	400	385	385
Luggage/Trunk capacity with folded seats VDA (up to roof)	litres	1176	1176	1161	1161
Luggage space, max length	mm	790	790	790	790
Luggage space, max width	mm	1103	1103	1103	1103
Minimum ground clearance	mm	155	155	155	155
CHASSIS					
Driven wheels		Front Wheel Drive			
Transmission		Automatic			
Suspension, front		MacPherson strut			
Suspension, rear		Twist beam axle			
Steering		Electric power assisted			
Brakes, front		Vented discs with Twin-piston sliding caliper			
Brakes, rear		Vented discs with single-piston floating caliper			
Battery type		Laminated lithium ion			
Voltage	V	350	350	350	350
Battery capacity	kWh	40	40	40	62
Tyre size		205/55R16 91V	215/50R17 91V	215/50R17 91V	215/50R17 91V
Wheel size		6.5 J x 16 16" Alloy	6.5 J x 17 17" Alloy	6.5 J x 17 17" Alloy	6.5 J x 17 17" Alloy

		ACENTA	N-CONNECTA	TEKNA	e+ TEKNA
PERFORMANCE					
Acceleration	0 - 100kph	7.9	7.9	7.9	7.3
Max. speed	kph	90	90	90	98
Electricity consumption	Wh/km	206	206	206	180
Gradeability Stop - Start Gradeability at GWW	Degrees	≥15			
Range (WLTP) City	km	390	390	390	510
Max. engine power	Kw/PS/min-1	110kW / 150PS / 3283 - 9795rpm			160kW / 217PS / 4600 - 5800rpm
Max. torque	Nm/min-1	320Nm / 0 - 3283rpm			340Nm / 500 - 4000rpm

CHARGING					
On-board charger	kW	3.6	6.6	6.6	6.6
Quick charger capability	kW	50			100
Charging Cable	m	EVSE (6m) and Mode 3 (6m)			
3.6kW OBC on 32A Wallbox	Empty warning to 100%	13h	N/A	N/A	N/A
6.6kW OBC on 32A Wallbox	Empty warning to 100%	N/A	7h30		11h30
10A EVSE cable on domestic socket	Empty warning to 100%	21h			32h
50kW Quick Charger	20% to 80%	*Time dependent on charging conditions, including Quick Charger type and condition, battery temperature and size as well as ambient temperature at point of use.			TBC

*Figures quoted are for a 40kWh battery. Time dependent on charging conditions, including charger type and condition, battery temperature as well as ambient temperature at point of use. Indicated rapid charging time requires use of a CHAdeMO rapid charger. The Nissan LEAF is designed to support the majority of journeys in daily life and is equipped with charging safeguards to protect the battery during repeated rapid charging sessions in a short period of time. The time taken for successive rapid charging can take longer if the battery temperature activates the battery safeguarding technology.

